



SWIFTSURE
— RANCH —

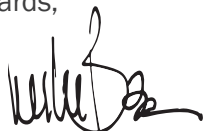
WELCOME

Dear Friends and Family of Swiftsure,

Thank you for a fantastic 2019! Over 300 participants of all ages and abilities pass through the gates of Swiftsure each year, welcomed every day by the herd of horses that call our ranch home. Participants find **strength**, **freedom**, and **connection**, each time a lesson or camp takes place, thanks to the dedication of our staff and volunteers. We all agree — Swiftsure Ranch is a very special place. We are able to offer so many opportunities for our participants to thrive, but just as importantly, ensure our horses thrive as well. It is our core responsibility to protect and care for our herd of horses, this magical environment, and all it supports.

Your generosity and support for our mission make our many stories of success and accomplishment possible. It's your commitment that brought us to Swiftsure Ranch eight years ago. We invite you to join us in stewarding the ranch and our future in the new decade. Thank you for your generous support in 2019!

Regards,



Leslie Benz, Board President



Paul Bennett, Executive Director

OUR MISSION

Empower individuals of all abilities to gain strength and freedom through therapeutic equine connections.

BOARD OF DIRECTORS

Leslie Benz President

Elizabeth Bunce Secretary

Karen Cox

Krista Detwiler

Terry Fowler Treasurer

Jen Goitiandia

Ann Leonardo VP of Finance

Annie Mabry

John McDonald

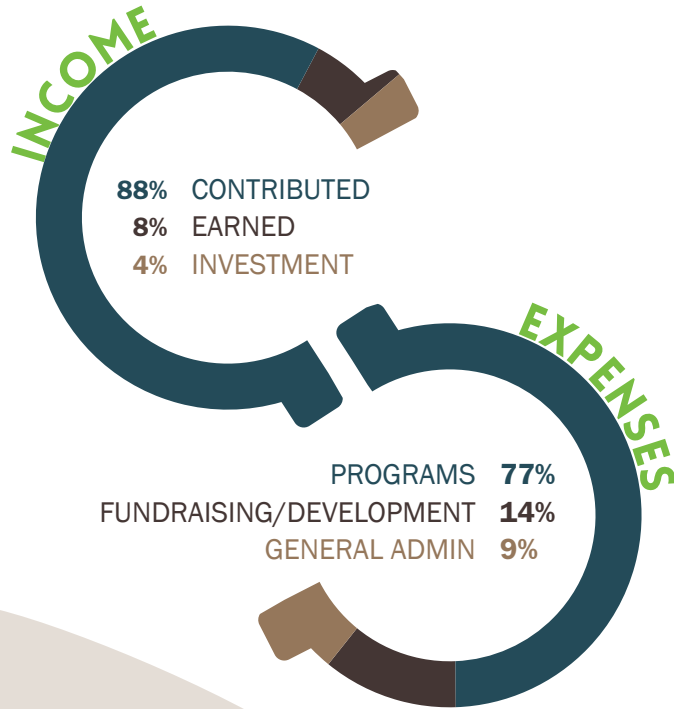
Kristin Orr

Joy Prudek

Kate Rosekrans

Teri Szombathy

Charlotte Westendorf



TAKE A RIDE

WITH HENRY ON

THE CARING PATH ...

OVER THE PAST YEAR, WE'VE ACHIEVED:

1

MOST SUCCESSFUL SUMMER EVER!

From Camp HorsePower, which fosters growth in social skills, confidence building, and teamwork, to our six collaborations with local nonprofits, we were able to provide **over 540 lessons in just 2 months!** ★

2

WOMEN VETERAN SUPPORT SYSTEM IN MOTION

Inspired by their weekend at Swiftsure Ranch, a group of women veterans experienced the power of the horse and an incredible bonding experience. This bond created friendships and a support system that they have with each other to this day.

3

SERVED 45 BLAINE COUNTY STUDENTS

During the school day, groups from the Blaine County Schools came to the ranch for a therapeutic equine connection. These connections built strength, a sense of freedom, and helped improve their social skills.

4

IMPROVED ACCESSIBILITY TO OUR INDOOR ARENA

Great strides were made by grading and paving entryways and pathways into our arena to ensure accessibility and access for all!

HOW HENRY & THE HERD CARE

MEET HENRY. He is one of 20 horses in the Swiftsure herd. A Norwegian Fjord at 18 years old and 1,200 lbs, he is a great example of what our herd does to care for the participants at Swiftsure. With his gentle disposition, steady gait, and honest eyes, he is the gateway for hundreds of children and adults to trust in him to do his job. We invite you to follow us through the property to see how Henry provides strength, freedom, and connection to everyone he meets throughout the year.



TO THE SENSORY TRAIL

Henry provides confidence and empowerment to Blaine County students of all ages while weaving through the sensory stations allowing for sensory stimulation and **STRENGTH** building.



IN THE ARENA

Henry confidently and quietly stands while an adult rider embraces a sense of **FREEDOM** being mechanically lifted on his back. Henry and the mechanical lift provide a partnership and vehicle for those who would not otherwise be able to mount astride his back.



IN THE BARN

Henry generates a **CONNECTION** as he is groomed by a senior participant. His gentle eye and lowered head provide an immediate bond and sense of companionship and understanding.





PASTURE & MEAL TIME FOR THE HERD

At the end of his day, Henry heads to the horse pasture to enjoy relaxation and grazing as well as important socialization with his herdmates in a natural environment. To provide a safe and nutritious pasture it takes:

- **6.5 miles of fencing** to keep the horses safely enclosed.
- **Reseeding** of the pastures to ensure optimal nutritional balance.
- **Irrigation** to keep the pastures watered for continued growth.



A SAFE AND HEALTHY WORKPLACE

For Henry and our herd to do their job of providing an even, steady gait and a forgiving and compassionate temperament while riding in our arena it takes:

- **Daily grooming and irrigation** of the arena footing to provide a level, cushioned base which is essential for Henry to provide the most effective therapeutic impact for his participants.



A PLACE TO CALL HOME

It's important for Henry and our herd to have a place to call home when not at work. To make the horse barn a clean and comfortable home as well as place for them to receive necessary healthcare and services it takes:

- **Daily cleaning** of their stalls. Did you know that each horse can produce 50 lbs of poop a day? That's 365,000 lbs per year here! ★
- **Proper bedding** for them to rest their 1,000 lb bodies comfortably.
- Ample space to provide **essential vet care**.

VOLUNTEERS

\$192,000

total value of services/year



PARTICIPANTS

13,920

hours in the saddle/year
(participant/equine interaction)



20

HORSES



RANCH

94,000★

pounds of hay produced/year



TRAILS

1,644

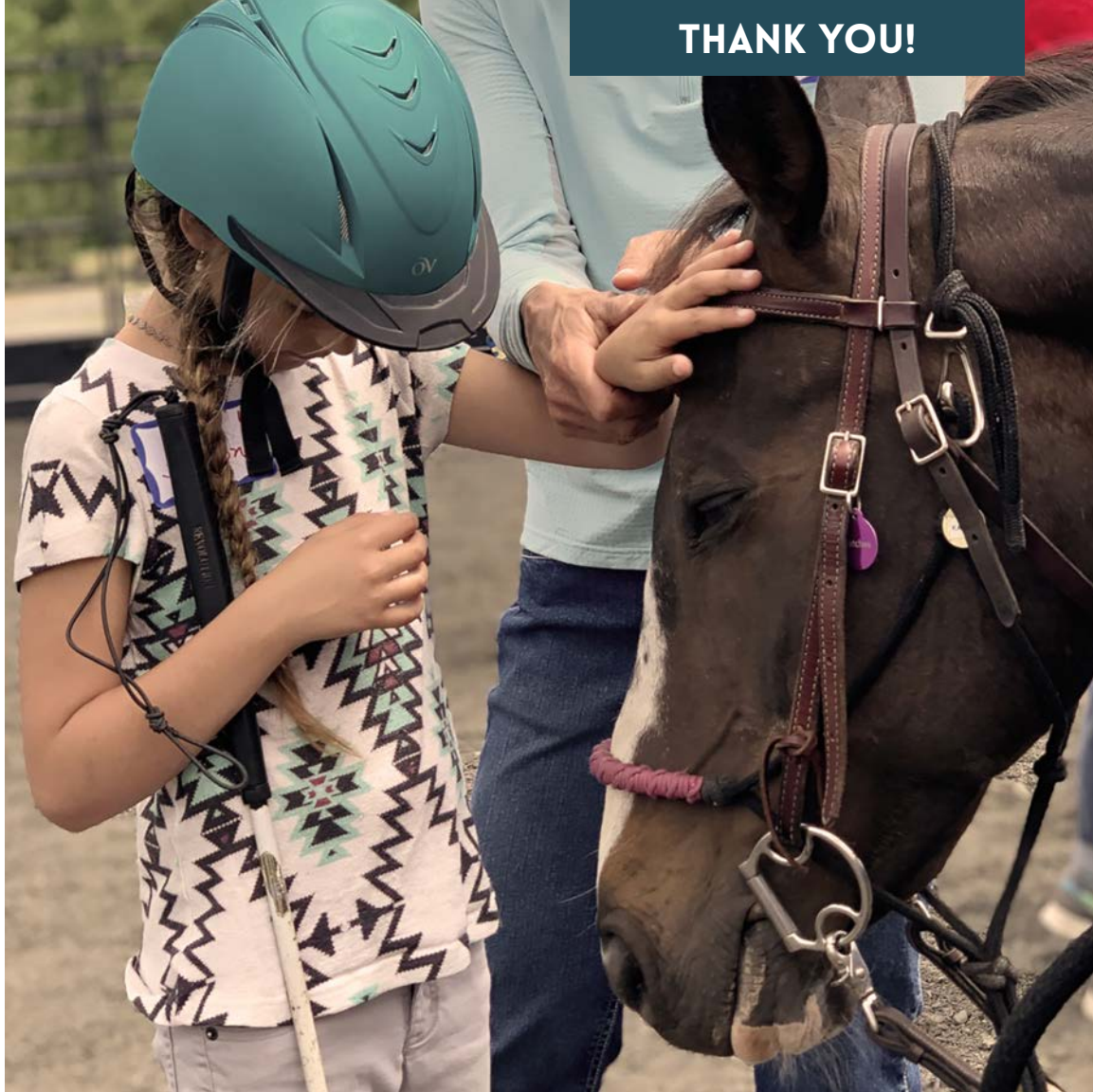
miles ridden on trails/year

**WE COULD
NOT DO THIS
WITHOUT
YOUR
SUPPORT!**

◀ **2019 IMPACT**

We are deeply grateful for all of you! With your support the foundation is laid for Swiftsure to spread strength, freedom, and connection. Thank you for helping us continue on the path of caring — caring for our herd, our ranch, and our participants.

THANK YOU!





SWIFTSURE
— RANCH —

Therapeutic Equestrian Center
www.swiftsureranch.org

114 Calypso Lane
Bellevue, ID 83313



YOUR CARE IN ACTION

2019 IMPACT REPORT



Can you find the
3 FASCINATING FACTS
hidden in this report?